

Agroforestry, a chance for Europe

European Agroforestry Federation

Presented by

C. Dupraz EURAF President

Rosa Mosquada, EURAF secretary

Jeroen Watte, EURAF deputy-secretary

Dirk Freese, EURAF Treasurer

April 2012





Le bocage dans le Perche, près de Nogent-le-Rotrou (Eure-et-Loir). - Cl. L.P.V.A.









On-farm participative research



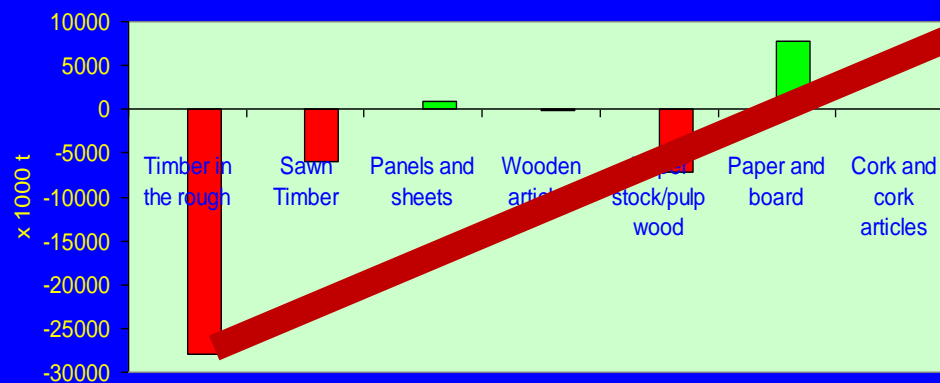




Agroforestry
production



EU external trade in forest products (EU, 2002)



Forest Product



1996



1997



2002



2003



Land
Equivalent
Ratio

1.2 to 1.6

Poplars-winter cereals
14 year cycle



A 1.4 LER means

that a 100 ha agroforestry farms produces as much crop and tree products as a conventional 140 ha farm where trees and crops are separated

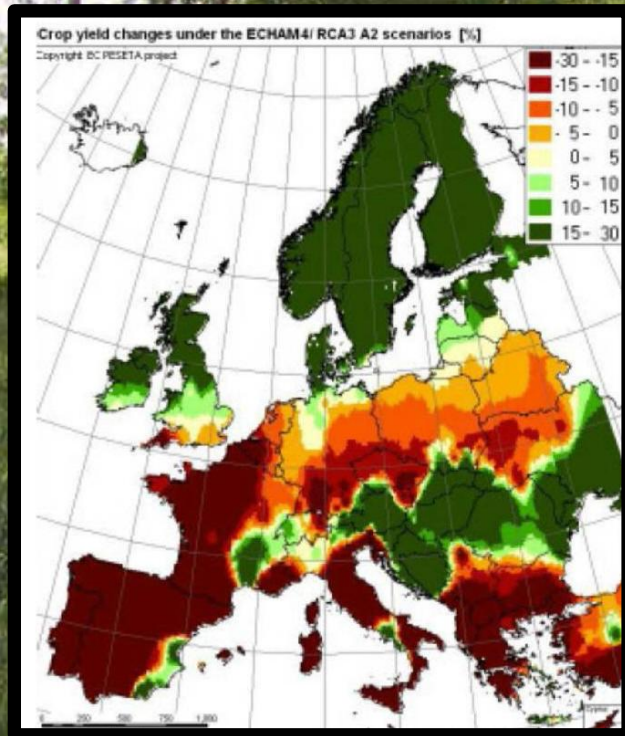


->>> Increased efficiency of natural production factors (light, water, natural nitrogen)

Agroforestry
environmental
services

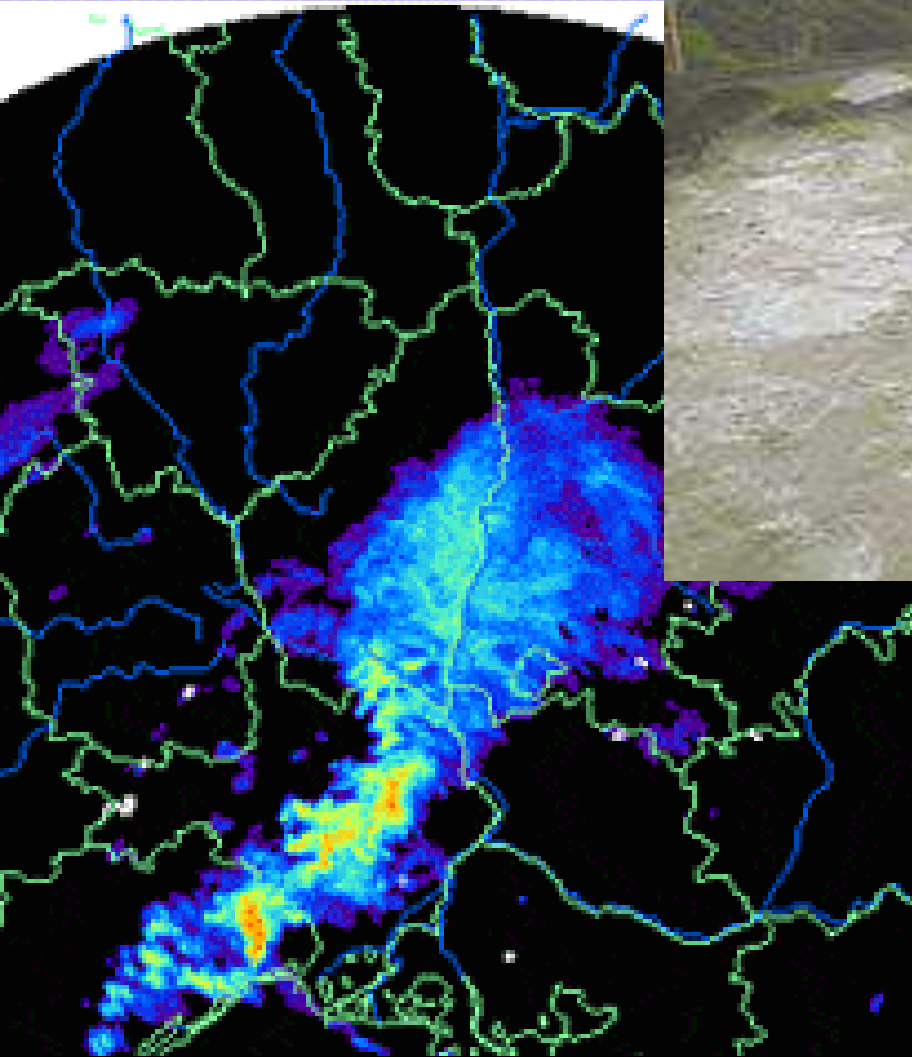
Adaptation to Climate Change





CROPS IN AGROFORESTRY SYSTEMS ARE PROTECTED AGAINST CLIMATE CHANGE HAZARDS

08/09/02 13.00TU





About 300 million trees were felled in France, approximately 3% of the national total (photo courtesy AFP)

30W

20W

10W

40N



Mitigation of Climate Change : Carbon storage



Agroforestry :

1 to 2 T C/ha/year

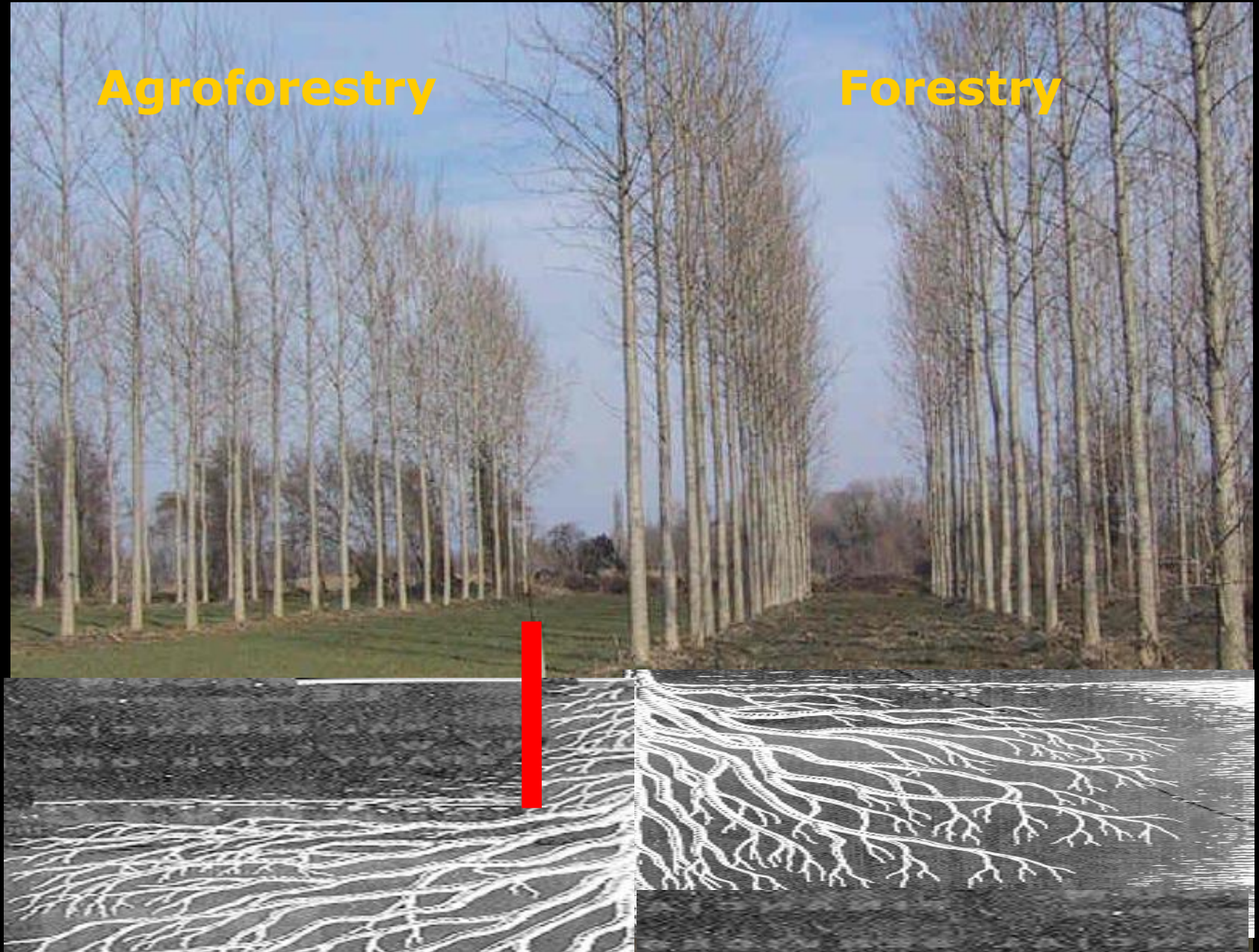
More than most other options for C
sequestration in European agriculture

Soil, water, biodiversity protection



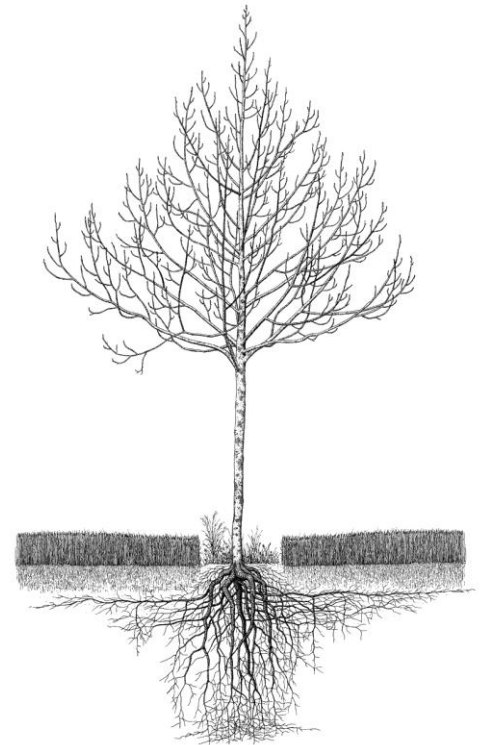
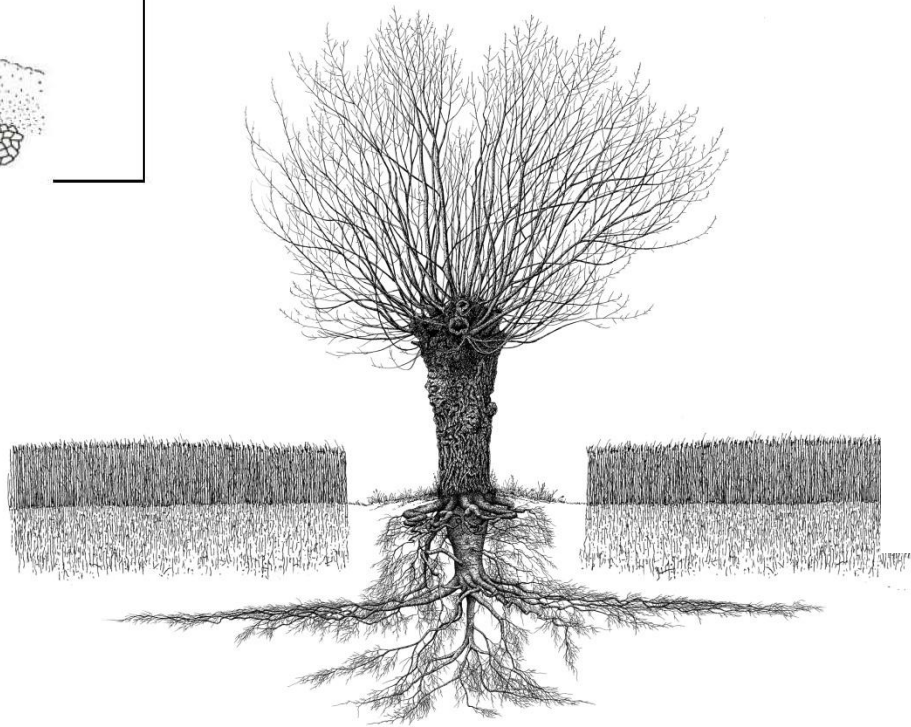
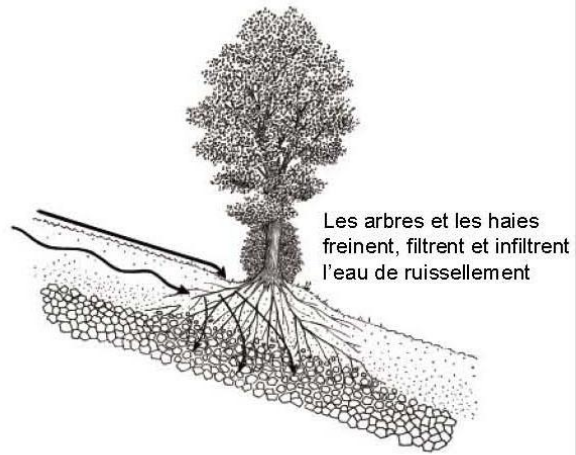
Agroforestry

Forestry



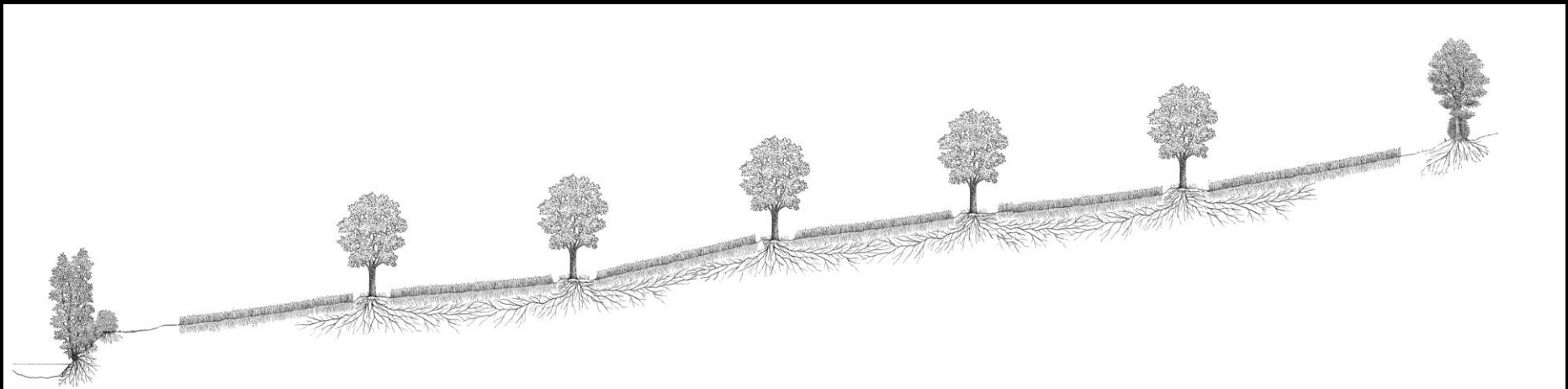
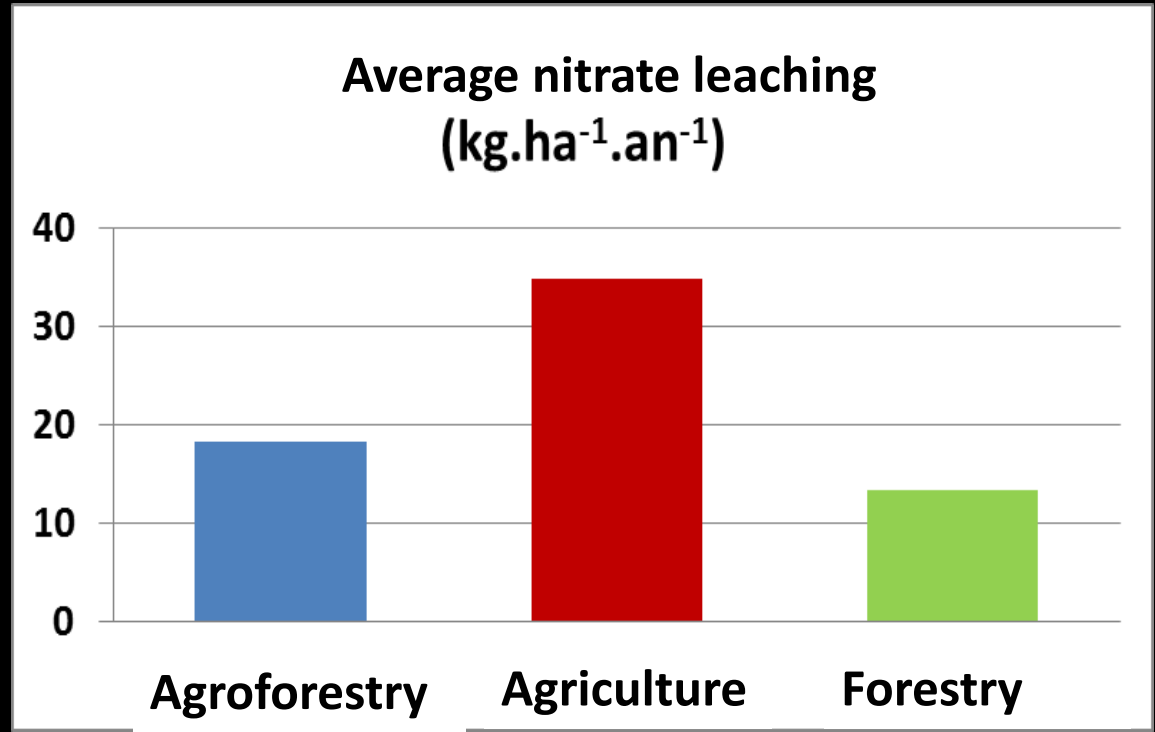
DEEP ROOTS : NITRATE AND PESTICIDE LEACHING REDUCED

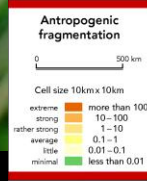
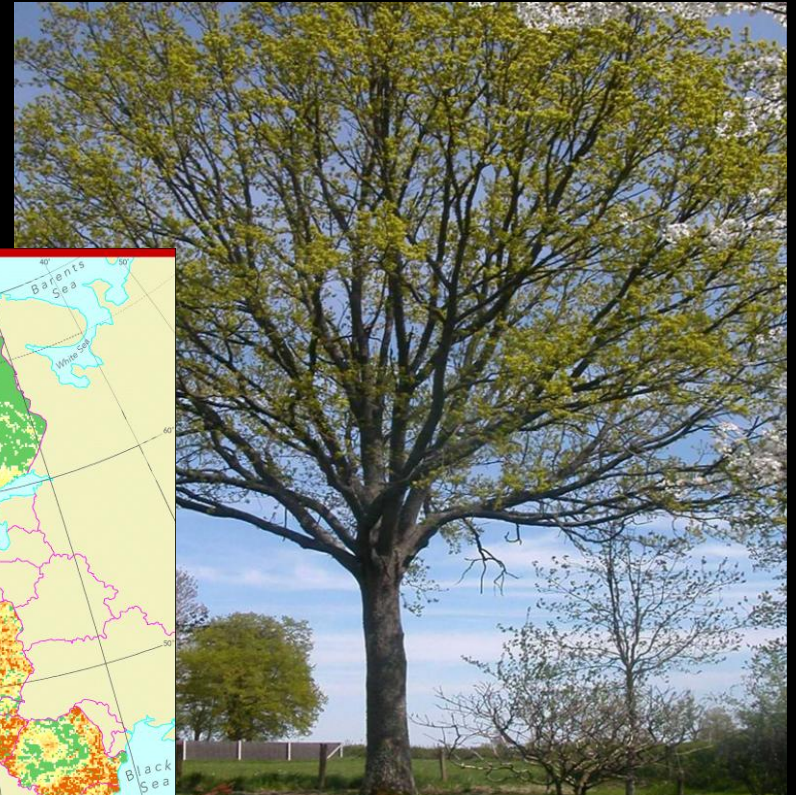
Deep roots ecosystem services



Strong reduction of Nitrogen transfers to water tables

Site : Restinclières,
Prades Le Lez,
France

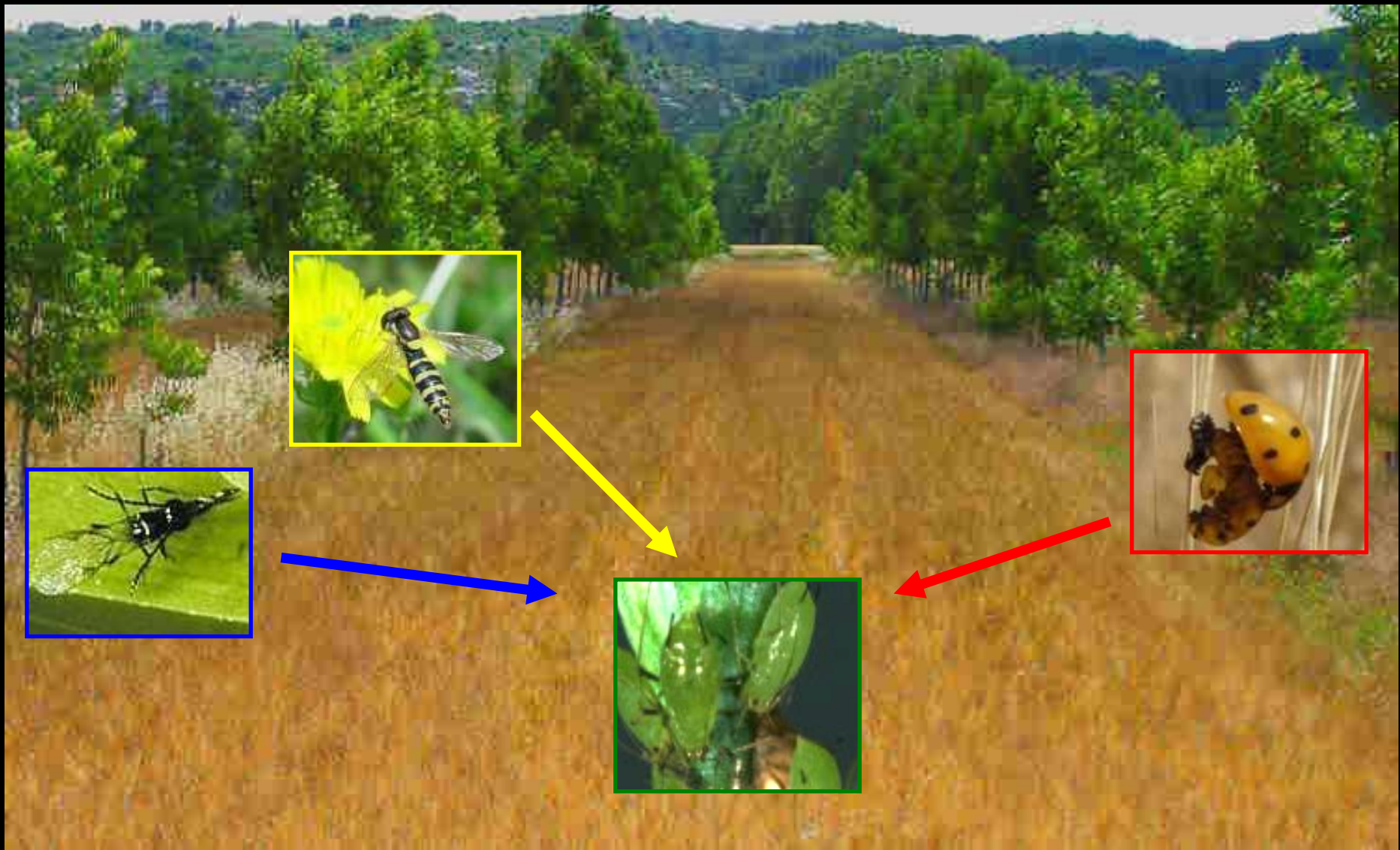




Habitat fragmentation map in Europe : a serious concern



Reduction in the use of
fertilisers and pesticides



The next CAP and Agroforestry



Commission européenne



LA POLITIQUE AGRICOLE COMMUNE EXPLIQUÉE



Has the Common Agricultural Policy been killing Agroforestry?

Paul J. Burgess

*Department of Environmental Science and Technology
Cranfield University, Cranfield, MK43 0AL, United Kingdom*

16 December 2011

P.Burgess@cranfield.ac.uk

2011 : Alert : more trees destroyed
evrywhere



Why ? Fears that the new CAP will not be tree-friendly : save the subsidies!



EURAF has suggestions
available for a tree-friendly
CAP

Simple
Costless
Effective

1. Draft Council Regulation 2011/0280: Rules for direct payments

Article 4(1e): "agricultural area" means any area taken up by arable land, permanent grassland, permanent crops, or a combination of these in agroforestry systems;

Article 4(1l): "agroforestry" means land-use systems and practices where woody perennials are deliberately integrated with crops and/or animals on the same land management unit. The trees may be single or in groups inside parcels (silvoarable agroforestry, silvopastoralism, grazed or intercropped orchards) or on the limits between parcels (hedges, tree lines).

Article 32: Agroforestry as Ecological Focus Areas

2. Draft Council Regulation 2011/0282: Support for rural development

Article 24 : Excellent, but :

Allow member states to define tree density thresholds
(minimum, maximum)

Provide support for all Agroforestry Systems

Innovative GAEC rules including trees and all natural assets on the farm

Field trees in the future CAP *Proposals*

This document presents the proposals submitted by the AFAHC (French association for field trees and hedgerows) to the working group on "field trees and the future CAP", set up by the MAAPRAT (Ministry of agriculture, foodstuffs, fisheries, rural life and spatial planning), the participants in which include the AFAF (French agroforestry association) and the APCA (Standing assembly of the French chambers of agriculture). The MEDDTL (Ministry of ecology, sustainable development, transport and



Habitat area ratio criterion

2. Draft Council Regulation 2011/0282: Support for rural development

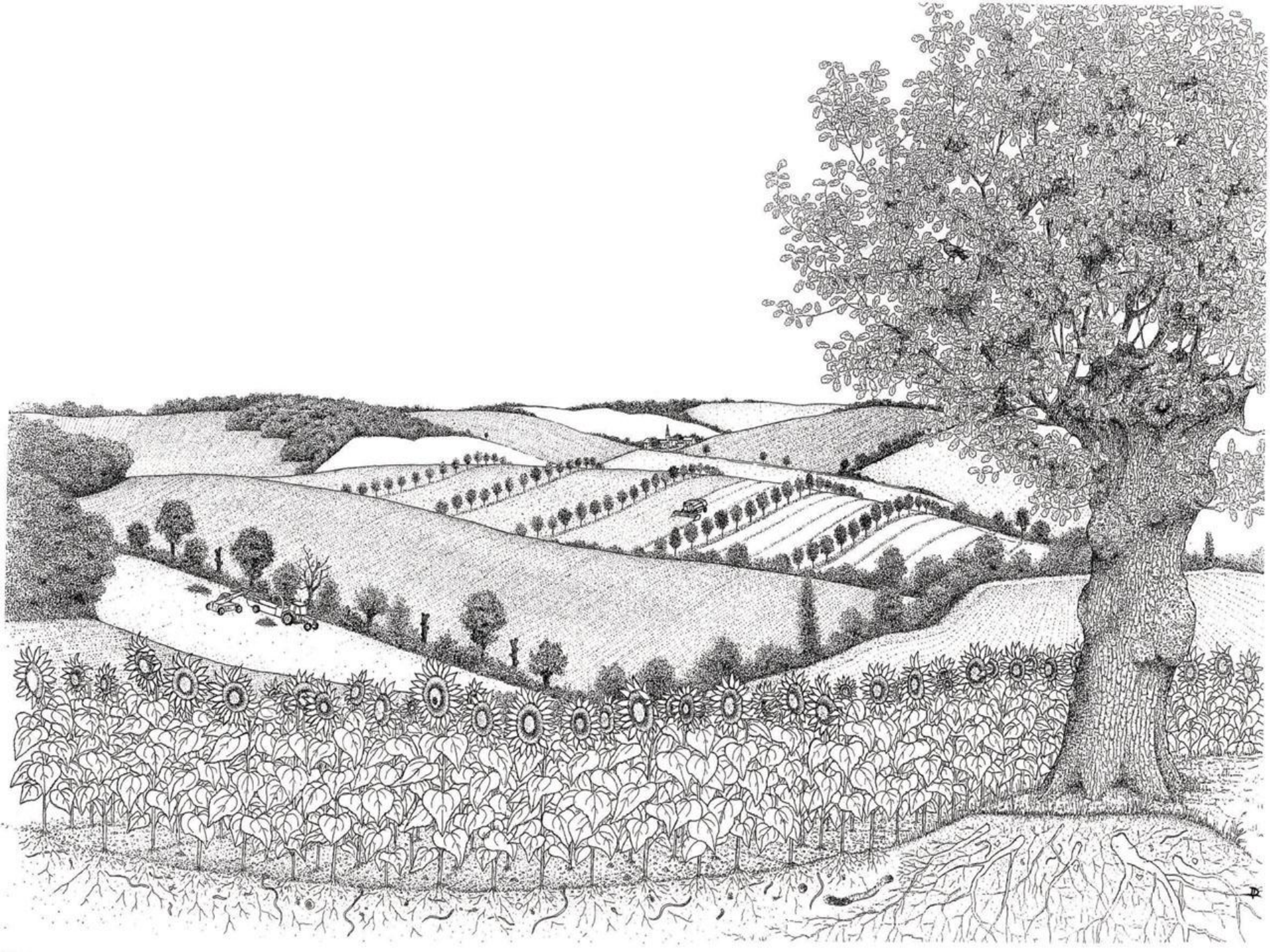
Article 24 : new writing

Establishment of agroforestry systems on agricultural or forestry land

Support under Article 22(1)(b) shall be granted to private landowners, tenants, municipalities and their associations and shall cover the costs of establishment **or conversion to an agroforestry system** and an annual premium per hectare to cover the costs of maintenance for a **minimum** period of **ten** years.

"Agroforestry systems" shall mean land use systems **and practices where woody perennials are deliberately integrated with crops and/or animals on the same land management unit. The trees may be single, in groups or in rows inside parcels (silvoarable agroforestry, silvopastoralism, grazed orchards) or on the limits between parcels (hedges, tree lines).** The maximum and minimum number of trees (or cover) per hectare shall be determined by the Member States taking account local pedo-climatic conditions, forestry species and the need to ensure agricultural **or livestock grazing** use of the land.

Support for new plantations in agricultural lands and establishment and maintenance of agroforestry practices, including silvopastoral systems, shall be limited to the maximum support rate laid down in Annex 1 (80%).



Product and Protect



